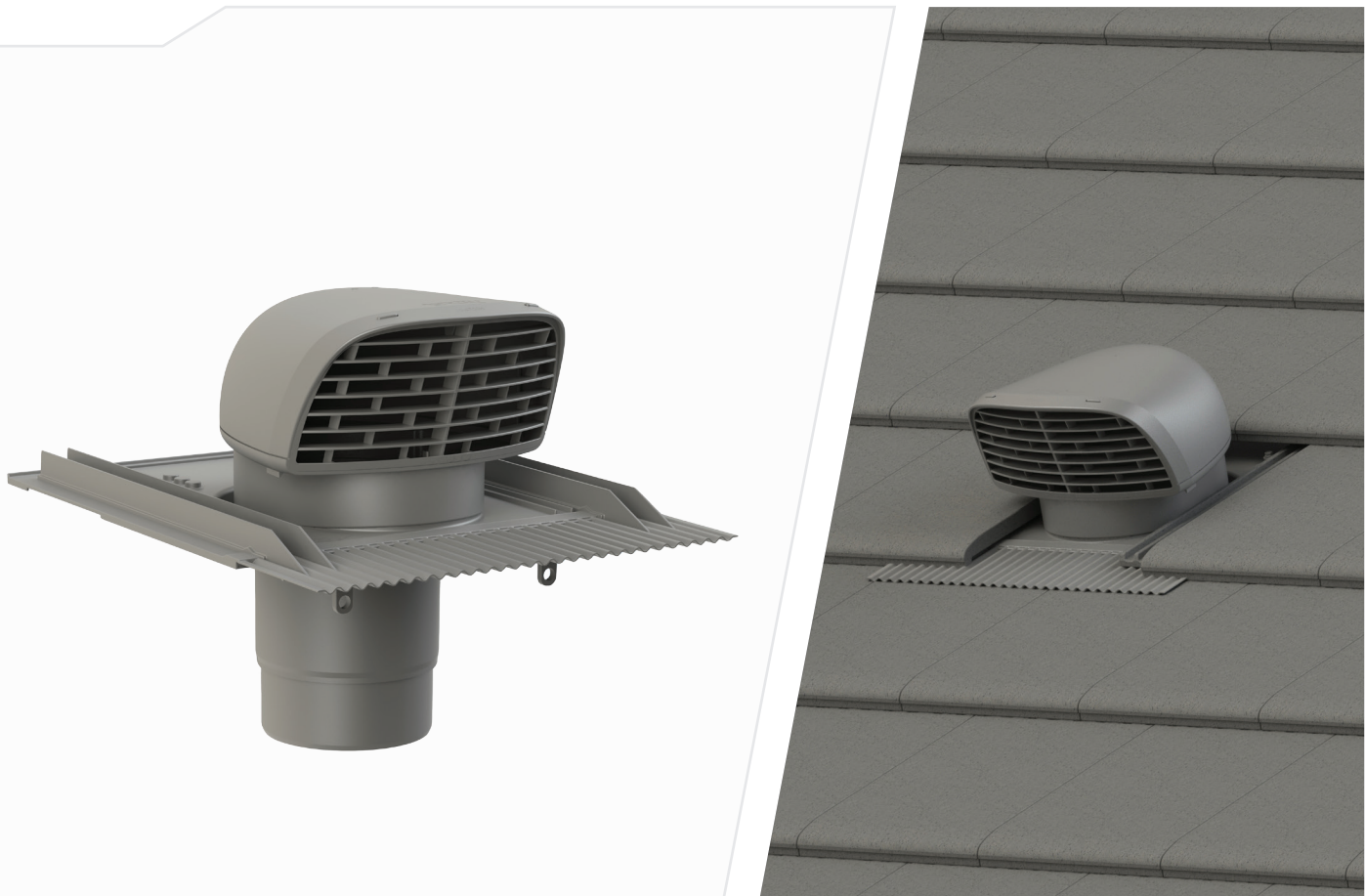


VILPE[®] Scoop exhaust vent

Exhaust vent solution for conducting the exhaust air through the roof



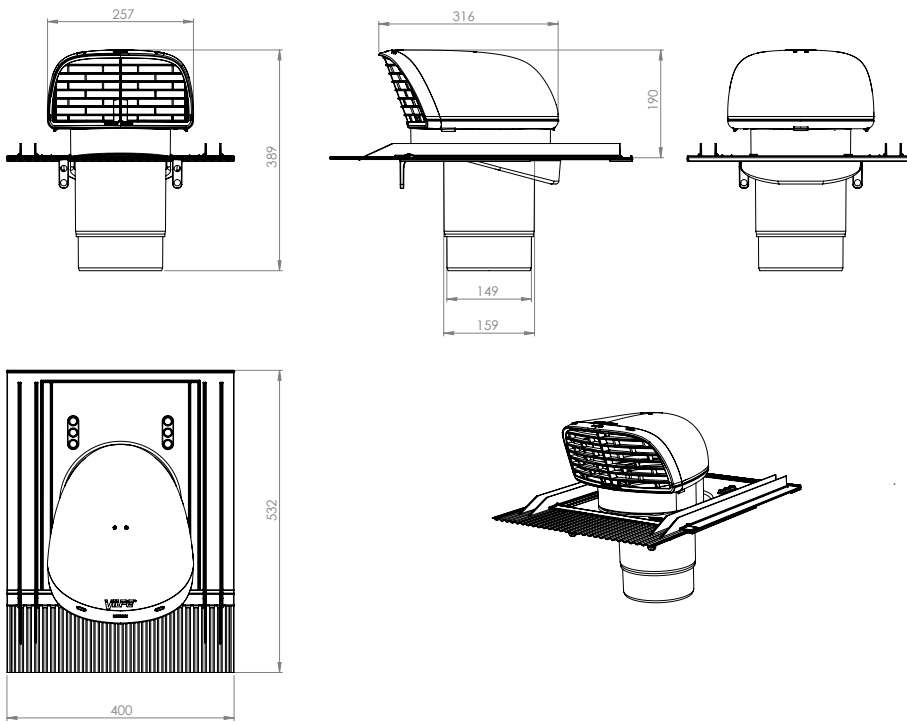
VILPE[®] Scoop exhaust vent keeps indoor air fresh

VILPE[®] Scoop exhaust vent is designed for unobtrusive transfer of exhaust air out of a home through the roof. With the VILPE[®] Scoop exhaust vent, exhaust air e.g. from a ventilation machine or a kitchen cooker hood can be conducted out to the roof.

VILPE[®] Scoop exhaust vent is suitable for ducts with diameters of 150/160 mm, and different models will be available for various roofing materials. The VILPE[®] Scoop Universal (pictured above) will be the first model to become available and is suited for most tile roofings. For availability of other models for other roofing materials, contact our sales staff.

The VILPE[®] Scoop exhaust vent is easy to install on different roof pitches and roofing materials. The hood of the VILPE[®] Scoop clicks open for easy access.

Dimensions of VILPE® Scoop Universal



Material

The Scoop exhaust vent, like all VILPE® products, are made of non-corrosive, weather- and shockproof, recyclable and dyed throughout polypropylene plastic (PP). The plastic is also UV protected. The material is chemically neutral and it constantly withstands temperatures from -30°C to 80°C, and temporarily from -40°C to +120°C.

Standard colours

- black, RAL 9017 (dE 1,17)
- brown, RAL 8017 (dE 2,33)
- green, RAL 6020 (dE 1,91)
- grey, RAL 7015 (dE 2,11)
- red, RAL 3009 (dE 4,92)
- brick red, RAL 8004 (dE 2,08)
- light grey, RAL 7040 (dE 0,54)

Aerodynamic and flow noise properties

Device: VILPE® Scoop 160 (Ø 160 mm duct)
 VTT-S-01418-16
 EN 12238:2001
 ISO 5135:1997
 Air density: 1.20 kg/m³

